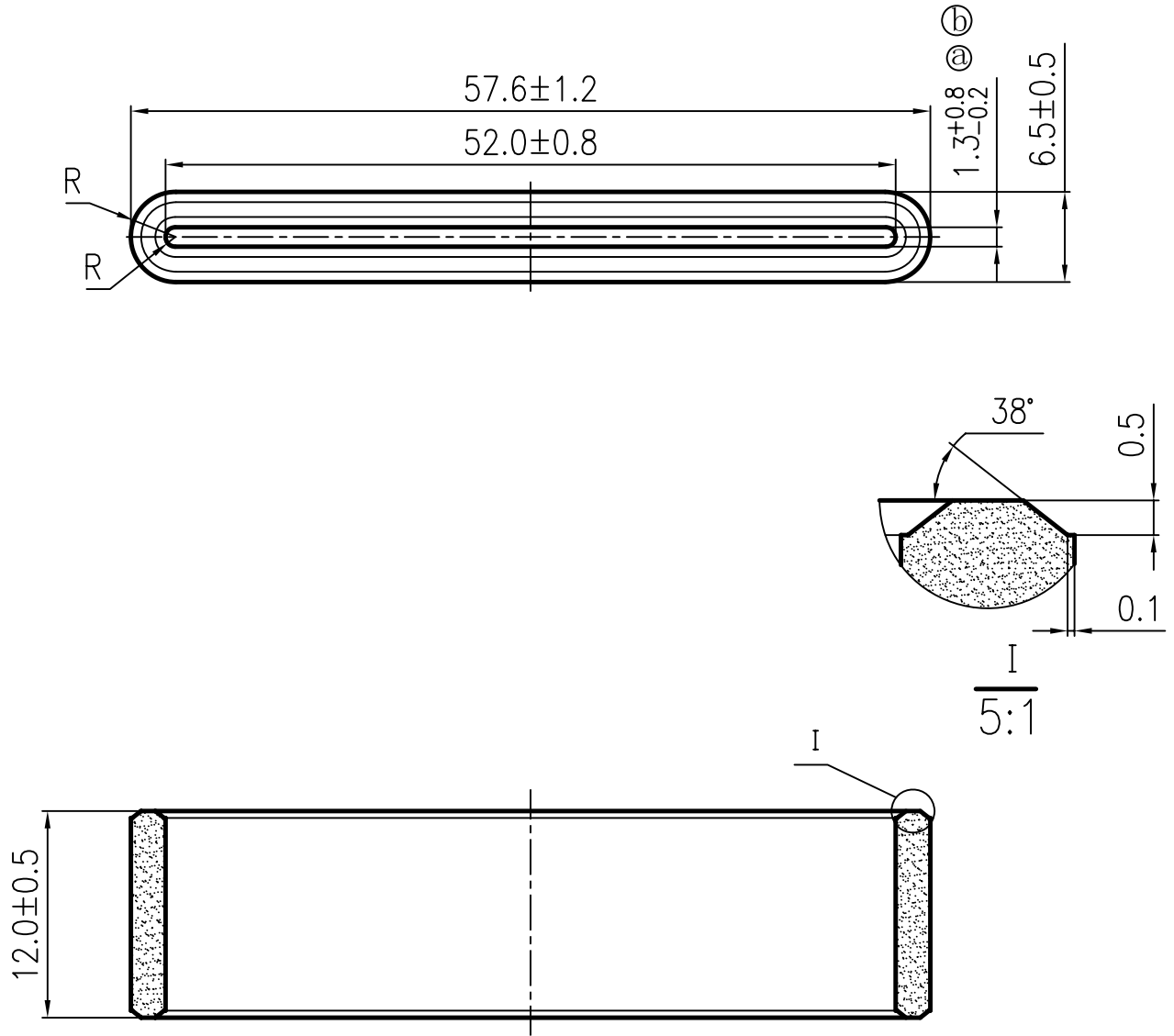


全部 



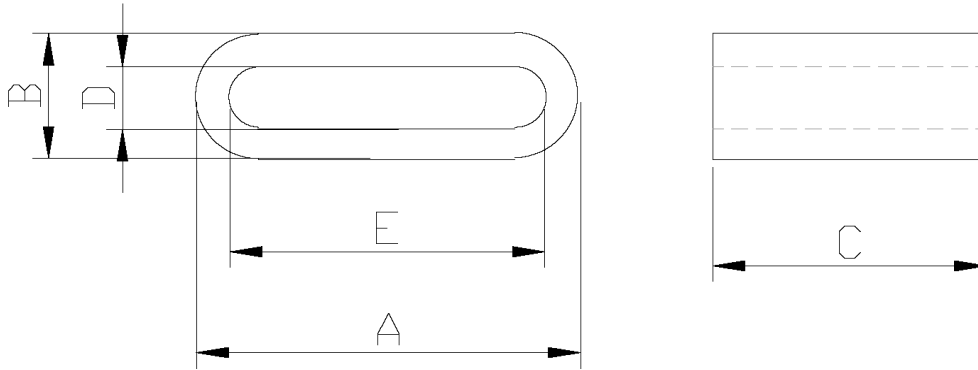
⑥ 弯曲度 ≤ 0.7

						 <b>软磁事业部</b> TY 57.6X6.5X12 磁芯		
⑥	2		10-71		10.02.05			
⑦	1		09-816		09.12.17			
标记	处数	分区	更改文件号	签名	年月日			
设计			09.09.04	标准化		阶段标记	重量	比例
CAD								2:1
审核				批准				
工艺				REV	C	共	页	第
						DM7.780.40683		



# TY cores

TY31X5X12B



## CORE SETS

### CORE DIMENSIONS (mm)

Dimensions (mm)					Weight (g)
A	B	C	D	E	
31.0±1.0	5±0.4	12.0±0.4	0.5 <sup>+0.6</sup> <sub>-0</sub>	27.0±0.7	7.96

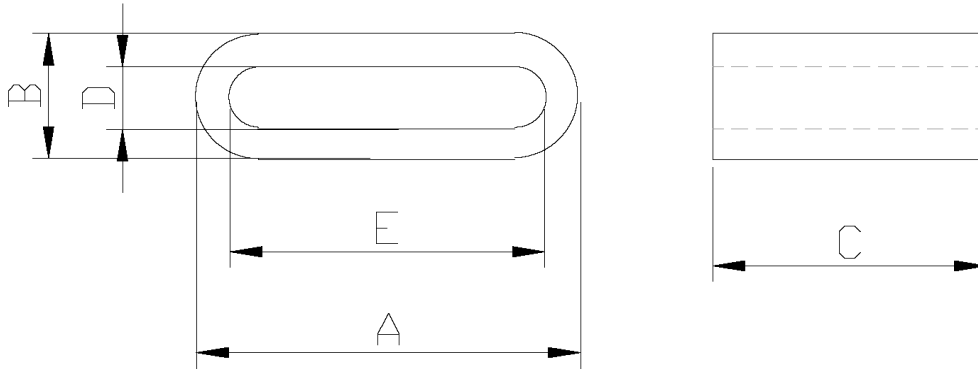
### Characteristic

Grade	Z1 (Ω)	Z2 (Ω)
	f=25MHz U=1.0V N=1Ts, Φ0.5 mm X 50mm	f=100MHz U=1.0V N=1Ts, Φ0.5 mm X 50mm
DM65A	20 min	50 min



# TY cores

TY33X6.5X12



## CORE SETS

### CORE DIMENSIONS (mm)

Dimensions (mm)					Weight (g)
A	B	C	D	E	
33±1.5	6.5±0.5	12±0.8	1.3 <sup>+0.5</sup> <sub>-0.1</sub>	27.8±1.5	11.57

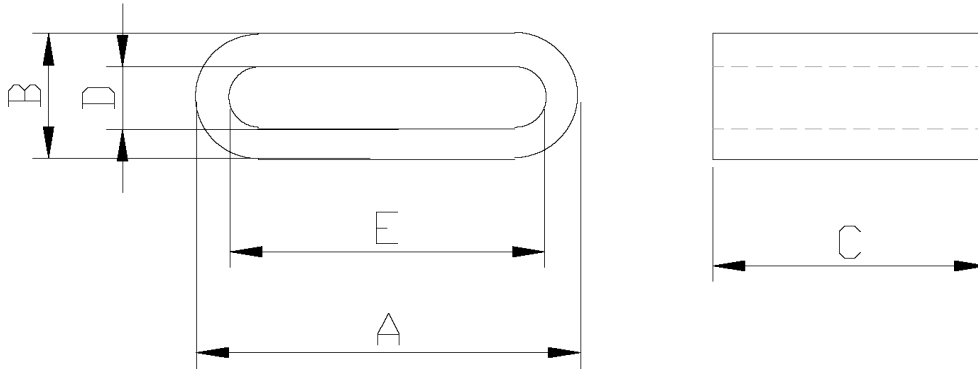
### Characteristic

Grade	Z1 (Ω)	
	f=50MHz U=1.0V N=1Ts, Φ0.8 mm X 100mm	
DN85H	28 min	



# TY cores

TY38. 3X12X25



## CORE SETS

### CORE DIMENSIONS (mm)

Dimensions (mm)					Weight (g)
A	B	C	D	E	
38.3±0.5	12.0±0.4	25.3±0.5	1.8±0.5	26.6±0.3	56.73

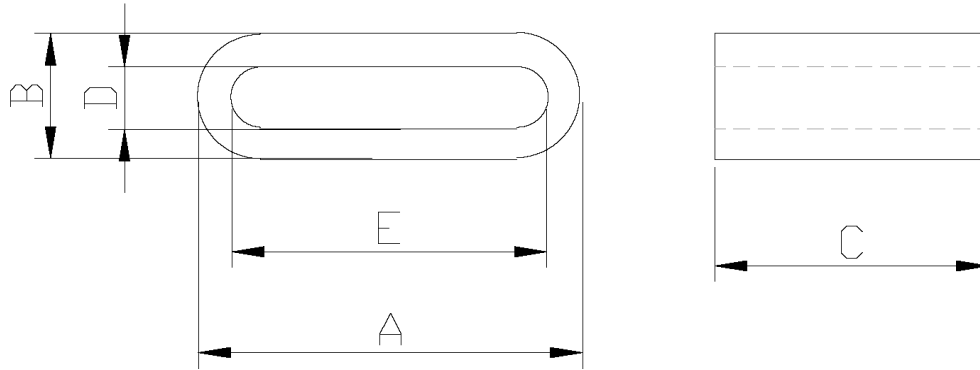
## Characteristic

Grade	Z1 (Ω)	Z2 (Ω)
	f=25MHz U=1.0V N=1Ts, Φ1.0 mm X 100mm	f=100MHz U=1.0V N=1Ts, Φ1.0 mm X 100mm
DN85H	70 min	100 min



# TY cores

TY45. 2X6. 5X12



## CORE SETS

### CORE DIMENSIONS (mm)

Dimensions (mm)					Weight (g)
A	B	C	D	E	
45.2±1.0	6.5±0.5	12.0±0.5	1.3 <sup>+0.8</sup> <sub>-0.15</sub>	40.0±0.7	15.76

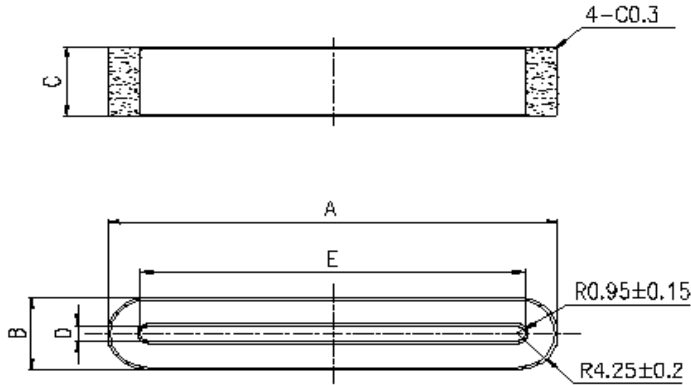
### Characteristic

Grade	Z1 (Ω)	Z2 (Ω)
	f=25MHz U=1.0V N=1Ts, Φ1.0 mm X 100mm	f=100MHz U=1.0V N=1Ts, Φ1.0 mm X 100mm
DN85H	15 min	40 min



# TY cores

TY47.35X8.5X7.5



## CORE SETS

### CORE DIMENSIONS (mm)

Dimensions (mm)					Weight (g)
A	B	C	D	E	
$47.35 \pm 1.0$	$8.5 \pm 0.4$	$7.5 \pm 0.5$	$1.9 \pm 0.3$	$40.75 \pm 0.75$	12.68

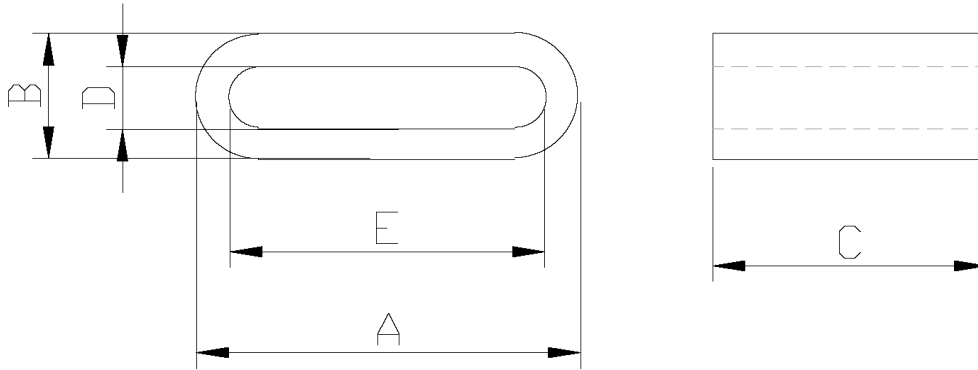
### Characteristic

Grade	Z1 ( $\Omega$ )	Z2 ( $\Omega$ )
		$f=25\text{MHz}$ $U=1.0\text{V}$ $N=1\text{Ts}, \Phi 1.0 \text{ mm X } 200\text{mm}$
DN85H	20 min	35 min
DN10H	10 min	65 min



# TY cores

TY7.0X4.0X8.0



## CORE SETS

### CORE DIMENSIONS (mm)

Dimensions (mm)					Weight (g)
A	B	C	D	E	
7.0±0.5	4.0±0.3	8.0±0.5	1.6 <sup>+0.5</sup> <sub>-0.3</sub>	5.0±0.5	0.89

## Characteristic

Grade	Z1 (Ω)	Z2 (Ω)
	f=25MHz U=1.0V N=1Ts, Φ1.0 mm X 100mm	f=100MHz U=1.0V N=1Ts, Φ1.0 mm X 100mm
DN65H	20 min	45 min