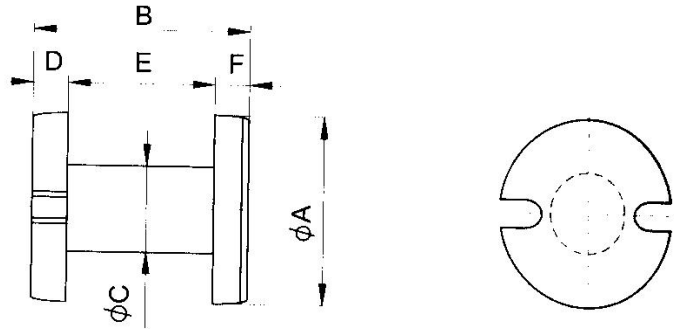




I cores

IA12X5.5X15.5



CORE SETS

CORE DIMENSIONS (mm)

Dimensions (mm)						Weight (g)
$\phi A$	B	$\phi C$	D	E	F	
$12.0 \pm 0.2$	$15.5 \pm 0.3$	$5.5^{+0.4}_{-0}$	$2.5 \pm 0.2$	$10.0 \pm 0.2$	$3.0 \pm 0.2$	4.5

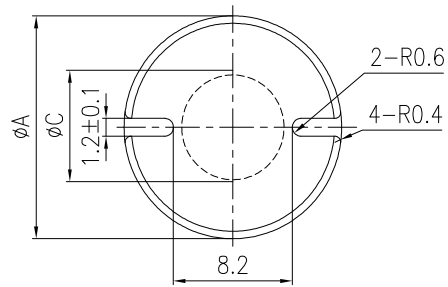
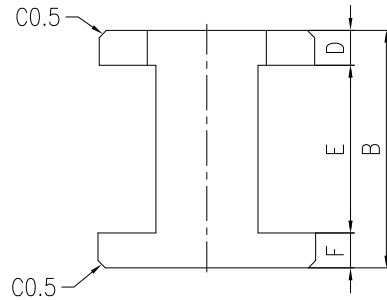
Characteristic

Grade	$L (\mu H)$	$L_{3.0A} (\mu H)$
		$f=100kHz$ $U=1.0V$ $N=20Ts, \Phi 0.5 mm$
DN85H	$19 \pm 20\%$	$\geq 90\% \times L_{0A}$



I cores

IA15X7X16



CORE SETS

CORE DIMENSIONS (mm)

Dimensions (mm)						Weight (g)
$\phi A$	B	$\phi C$	D	E	F	
$15.0 \pm 0.2$	$16.0 \pm 0.2$	$7.0 \pm 0.2$	$2.0 \pm 0.1$	$12.0 \pm 0.2$	$2.0 \pm 0.1$	6.07

Characteristic

Grade	$L (\mu H)$	$L_{7.0A} (\mu H)$
		$f=100kHz$ $U=1.0V$ $N=20T_s, \Phi 0.5 \text{ mm}$
DN80L	$24 \pm 20\%$	$\geq 90\% \times L_{0A}$