

Hb 型磁芯 · Hb Cores

ORDERING CODE SYSTEM

Hb 3.85 × 3.05 × 1.55 DN35H



I 3.85 × 1.5 × 2.15 DN35H

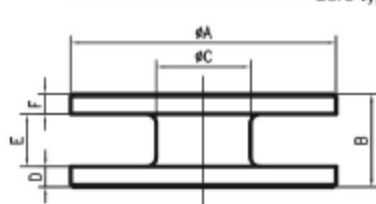


Figure 1



Figure 2

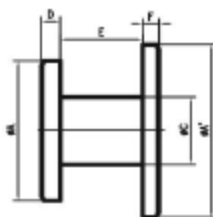


Figure 3

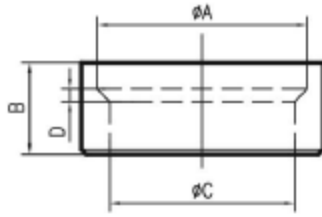


Figure 4

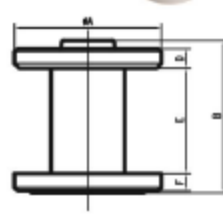


Figure 5

型号 Part number	图号 Fig.	尺寸 Dimensions(mm)							重量 Wt(g/set)
		A (ϕA)	A' ($\phi A'$)	B	C	D	E	F	
Hb 3.85 × 3.05 × 1.55	2	3.85 ± 0.1	/	1.55 ± 0.1	3.05 ± 0.1	0.4	0.8	1	/
Ia 3.85 × 1.5 × 2.15	3	3.85 ± 0.1	2.85 ± 0.1	/	1.5 ± 0.1	0.55 ± 0.1	1.05 ± 0.1	0.55 ± 0.1	/
Hb3.9X3.1X1.55	2	3.9 ± 0.1	/	1.55 ± 0.1	3.1 ± 0.1	0.55	0.9	1.15	0.029
Ia3.9X1.5X2	3	3.9 ± 0.1	2.9 ± 0.1	1.5 ± 0.1	2.0 ± 0.1	0.45 ± 0.1	1.1 ± 0.1	0.45 ± 0.1	/
Hb4X3.2X2.8A	2	4.0 ± 0.1	/	2.8 ± 0.1	3.2 ± 0.1	0.8	1.3	1.7	/
Ia3.12X1.4X2.8A	3	3.12 ± 0.1	2.82 ± 0.1	2.8 ± 0.1	1.4 ± 0.1	0.4 ± 0.1	2.0 ± 0.1	0.4 ± 0.1	/
Hb5.95x5x2	2	5.95 ± 0.2	/	2.0 ± 0.1	5.0 ± 0.1	0.65	1.6 ± 0.1	2.2 ± 0.1	/
I4.5bX2.2X2.2	1	4.55 ± 0.1	/	2.2 ± 0.1	2.2 ± 0.1	0.45 ± 0.1	1.3 ± 0.1	0.45 ± 0.1	/
Hb 6.8 × 5.8 × 2.8	2	6.8 ± 0.2	/	2.8 ± 0.15	5.8 ± 0.2	0.9	1.5	2	/
I 5.3 × 2.55 × 2.8	1	5.3 ± 0.15	/	2.8 ± 0.15	2.55 ± 0.15	0.67 ± 0.15	1.46 ± 0.15	0.67 ± 0.15	0.2
Hb7.15X6.05X1.0	2	7.15 ± 0.2	/	1.0 ± 0.15	6.05 ± 0.2	0.3	0.8	1.5	/
I 5.6X2.6X1.4	1	5.6 ± 0.15	/	1.35 ± 0.15	2.6 ± 0.15	0.43 ± 0.1	0.5 ± 0.15	0.43 ± 0.1	/
Hb7.8X6.4X4.2	2	7.8 ± 0.2	/	4.2 ± 0.15	6.4 ± 0.2	0.7	/	/	0.3
I 5X2.8X4.1	1	5.0 ± 0.15	/	4.1 ± 0.15	2.8 ± 0.15	0.8 ± 0.15	2.5 ± 0.15	0.8 ± 0.15	/
Hb8.38X6.5X4.05	2	8.38 ± 0.2	/	4.05 ± 0.15	6.5 ± 0.2	1	2	2.6	0.365
I 4.5X2.5X3.7	1	4.5 ± 0.15	/	3.7 ± 0.15	2.5 ± 0.15	0.5 ± 0.15	2.7 ± 0.15	0.5 ± 0.15	/

注: 其它尺寸可以根据需求来制作

REMARK: OTHER SIZE ARE AVAILABLE UPON REQUEST

Hb 型磁芯 · Hb Cores

ORDERING CODE SYSTEM

Hb 3.85 × 3.05 × 1.55 DN35H

Material
Inside diameter
Length
Outside diameter
Core type

I 3.85 × 1.5 × 2.15 DN35H

Material
Length
Kingrod
Outside diameter
Core type

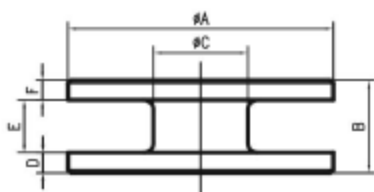


Figure 1

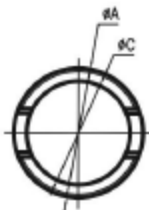


Figure 2

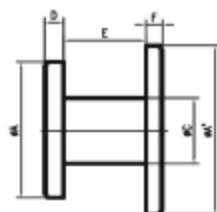


Figure 3

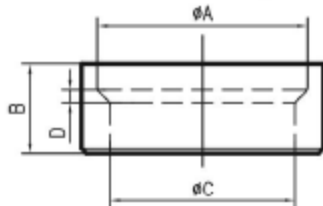


Figure 4

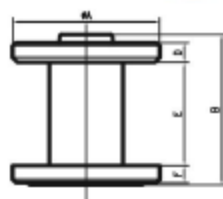


Figure 5

型号 Part number	图号 Fig.	尺寸 Dimensions(mm)							重量 Wt(g/set)
		A (ΦA)	A' (ΦA')	B	C	D	E	F	
Hb9.9X7.9X8.5	2	9.9 ± 0.2	/	8.5 ± 0.15	7.9 ± 0.2	1.5	1.5	2	/
I7X3.5X8.8	1	7.0 ± 0.15	/	8.8 ± 0.15	3.5 ± 0.15	1.0 ± 0.15	6.8 ± 0.15	1.0 ± 0.15	/
Hb9.9X8.1X3.4	2	9.9 ± 0.2	/	3.4 ± 0.15	8.1 ± 0.2	1.9	2.7	4.4	/
I7.7X3.7X3.7	1	7.7 ± 0.15	/	3.7 ± 0.15	3.7 ± 0.15	0.75 ± 0.15	2.1 ± 0.15	0.75 ± 0.15	/
Hb10X7.75X4.7	4	10.0 ± 0.2	/	4.7 ± 0.15	7.75 ± 0.2	1.3	/	/	0.652
I7.45X3.5X5.5	5	7.45 ± 0.15	/	5.5 ± 0.15	3.5 ± 0.15	1.0 ± 0.15	3.0 ± 0.15	1.0 ± 0.15	0.62
Hb10X8.4X1A	2	10.0 ± 0.2	/	1.0 ± 0.15	8.4 ± 0.2	0.25	1.4	1.8	/
I8X4.4X1.4A	1	8.0 ± 0.15	/	1.4 ± 0.15	4.4 ± 0.15	0.45 ± 0.15	0.5 ± 0.15	0.45 ± 0.15	/
Hb11.6X9.2X8	4	11.6 ± 0.2	/	8.0 ± 0.15	9.2 ± 0.2	0.5	/	/	1.487
I9X4.5X9.2	5	9.0 ± 0.15	/	9.2 ± 0.15	4.5 ± 0.15	1.2 ± 0.15	6.3 ± 0.15	1.05 ± 0.15	1.276
Hb12.2X10.1X5.3	2	12.2 ± 0.2	/	5.3 ± 0.15	10.1 ± 0.2	1.6	2.9	4	0.82
I9.6X5.8X5.5	1	9.6 ± 0.15	/	5.5 ± 0.15	5.8 ± 0.15	0.9 ± 0.15	3.7 ± 0.15	0.9 ± 0.15	1.19
Hb13X11X7.7B	2	13.0 ± 0.2	/	7.7 ± 0.15	11.0 ± 0.2	1	7	9	1.34
Ia13X5X9B	3	13.0 ± 0.2	10.5 ± 0.15	9.0 ± 0.2	5.0 ± 0.15	1.45 ± 0.15	6.3 ± 0.15	1.25 ± 0.15	/
Hb15X12.6X11	2	15.0 ± 0.2	/	11.0 ± 0.15	12.6 ± 0.2	2.5	2.8	5	/
Ia15X7.9X13	3	15.0 ± 0.2	11.0 ± 0.15	13.0 ± 0.2	7.9 ± 0.15	2.0 ± 0.15	9.0 ± 0.15	2.0 ± 0.15	/

注: 其它尺寸可以根据需求来制作

REMARK: OTHER SIZE ARE AVAILABLE UPON REQUEST